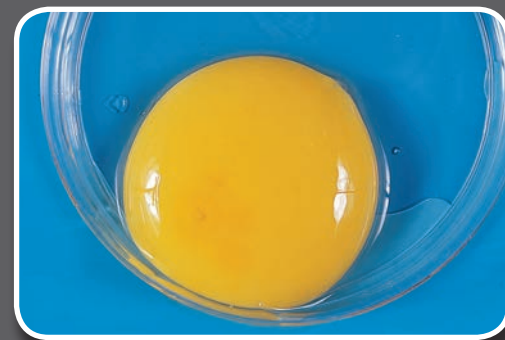
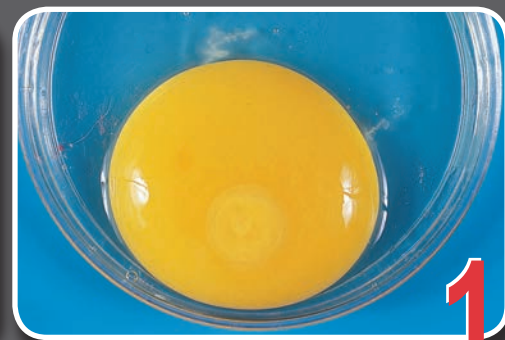


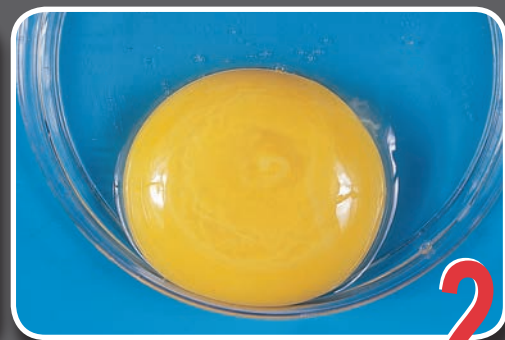
Chick Embryo Development



INFERTILE
• No development.



DAY 1
• Appearance of tissue development.



DAY 2
• Tissue development very visible.
• Appearance of blood vessels.



DAY 3
• Heart beats.
• Blood vessels very visible.



DAY 4
• Eye pigmented.



DAY 5
• Appearance of elbows and knees.



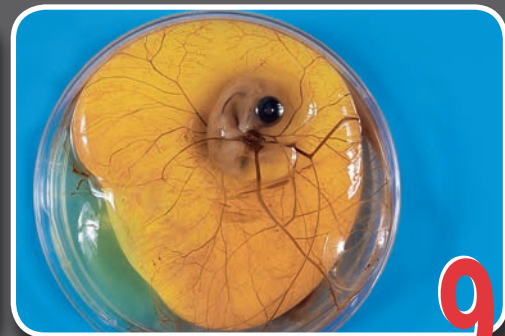
DAY 6
• Appearance of beak.
• Voluntary movements begin.



DAY 7
• Comb growth begins.
• Egg tooth begins to appear.



DAY 8
• Feather tracts seen.
• Upper and lower beak equal in length.



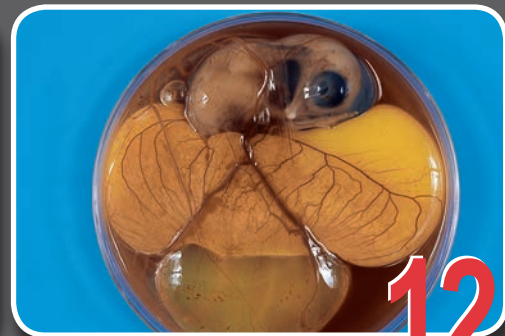
DAY 9
• Embryo starts to look bird-like.
• Mouth opening appears.



DAY 10
• Egg tooth prominent.
• Toe nails.



DAY 11
• Comb serrated.
• Tail feathers apparent.



DAY 12
• Toes fully formed.
• First few visible feathers.



DAY 13
• Appearance of scales.
• Body covered lightly with feathers.



DAY 14
• Embryo turns head towards large end of egg.



DAY 15
• Gut is drawn into abdominal cavity.



DAY 16
• Feathers cover complete body.
• Albumen nearly gone.



DAY 17
• Amniotic fluid decreases.
• Head is between legs.



DAY 18
• Growth of embryo nearly complete.
• Yolk sac is still on outside of embryo.
• Head is under the right wing



DAY 19
• Yolk sac draws into body cavity.
• Amniotic fluid gone.
• Embryo occupies most of space within egg (not in the air cell).



DAY 20
• Yolk sac drawn completely into body.
• Embryo becomes a chick (breathing in air cell).
• Internal and external pip.